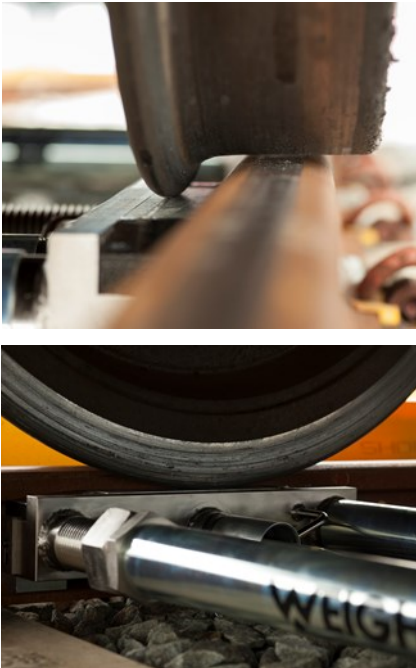


## PTW2 500X



Patent Approved

### STATIC, INDIVIDUAL WHEEL WEIGHT, TRAIN WEIGHING SYSTEM

Weighwell Engineering Ltd were the first company to provide portable train weighing systems. Today with over 25 years experience and knowledge we continue to be the industry leaders with 100's of systems worldwide.

The PTW2 500X can be carried by two men to any location and installed quickly. Once installed, the PTW2 500X gives the user the weight data for individual wheels, axles and carriages to establish if weight distribution is even.

The PTW2 500X requires the vehicles to be weighed statically, axle by axle. This method provides excellent accuracy and unrivalled flexibility and due to its portability and ease of installation, the PTW2 500X can weigh on multiple lines or positions

PTW2 500X is an ideal solution for providing individual wheel weight data for locomotives and passenger cars where an imbalance of weight could cause increased wear to the vehicles, thus highlighting possible issues relating to safety and loading symmetries.

#### KEY BENEFITS OF THE PTW2 SYSTEM

- PTW length of 500mm allows for greater flexibility without the need to remove clips or rail fastenings.
- Portable, quick and easy to install.
- Eliminates the need to install expensive weighbridges.
- Saves time and costs.
- Can be used for vehicle modifications and bogie changes.
- Factory pre-calibration eliminates the need for transportation of test weights or calibrated wagons.

The PTW2 500X is an excellent investment in terms of safety, accuracy and potential cost savings and with systems available for hire or purchase, the PTW will satisfy any budget.

## PTW2 500X

### 5 EASY STEPS FOR INSTALLATION



1. The PTW ready to be assembled.



2. Select location and check rail head wear.



3. Putting the PTW together.



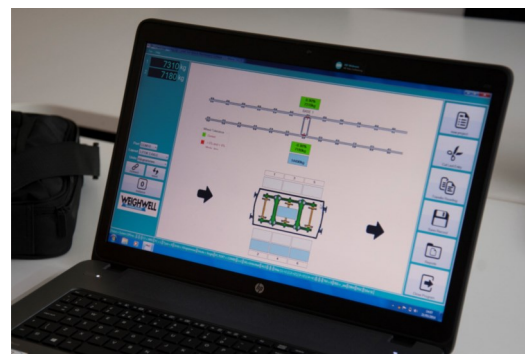
4. Positioning the PTW into the track.



5. Securing the PTW into the track.

### TECHNICAL DATA

- Length of PTW: 500mm
- Approximate weight: 37kg (heaviest section)
- Power supply: 110 - 240VAC / 12VDC
- Increment size: 10kg
- Materials: High quality tool and mild steels
- Temperature range: -20°C to +70°C
- Weighing range: 15.00 tonne per wheel (30.00 tonne per axle)
- Protection class: IP67
- Mounting: Rail keys to fit most rail types
- Installation time: 10-15 minutes



Laptop with our intuitive multilingual ptwX software

\*This PTW is not trade approved