



COMPANY PROFILE

Established in 1988, Weighwell provides precision train weighing solutions with our patented Portable Train Weigher (PTW). Our accurate rail scales are designed for both static and in-motion weighing, with the mission of enhancing safety within the rail industry.



WHO WE ARE

In 1988, at the age of just 22, Paul Horsfall founded Weighwell Engineering Ltd. Our journey began with the servicing of a wide range of weighing equipment, ranging from laboratory scales to fixed weighbridges.

After achieving early successes, such as the creation of a portable system for weighing individual bogies, Paul saw the potential for a more effective method of weighing rail vehicles. This vision led to the invention of the patented **Portable Train Weigher (PTW)**. By 1995, the **PTW** had evolved into a working prototype that would go on to set a new standard for weighing trains within the rail industry.



Our Core Values



SAFETY:

Prioritising wellbeing on the tracks and in every product we design.



PRECISION:

Delivering accurate solutions to help rail engineers make informed decisions.



QUALITY:

Never compromising on excellence in every product and service provided.



INTEGRITY:

Building long-term trust through transparency and ethical practices.



INNOVATION:

Pioneering new solutions to stay ahead of industry challenges.



SUSTAINABILITY:

Making environmentally conscious decisions for a greener future.

Inventor weighs in to keep trains rolling

TRUST THE INVENTOR

Launched officially at Railtex 1997, the **PTW** quickly earned accolades for its innovative design and impact on the rail industry, including Millennium Product status from the Design Council and various Department of Trade & Industry (DTI) SMART awards.



How the PTW Delivers Results



- 1 Compatible with different Track Gauges:** The **PTW** system is designed to support different track widths. Whether you need a solution for standard, broad or narrow gauge track, our weighing system can meet your needs.
- 2 Adaptable for a variety of Rail Profiles:** The **PTW** is designed to work with various rail profiles by utilising rail keys. These keys ensure a secure fitment, no matter the rail type used.
- 3 Flange-Friendly Transition:** Our latest patented design features an in-built ramp on the loadcell. This is beneficial for protecting rolling stock wheels and providing greater precision.

STATIC WEIGHING SYSTEMS

With 30 years of experience in portable train weighing, Weighwell is a trusted partner for rail depots worldwide.



Precision You Can Rely On

Accurately capture wheel weights and help identify unbalanced loads.

Optimised Depot Maintenance

Identifying issues early can help extend the lifespan of your rolling stock and prevent costly downtime.

Testing and Commissioning

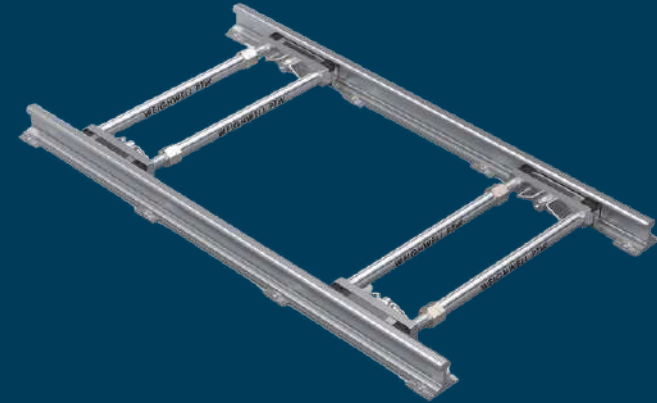
Ensure newly assembled rail vehicles meet the necessary safety standards.

Our Range

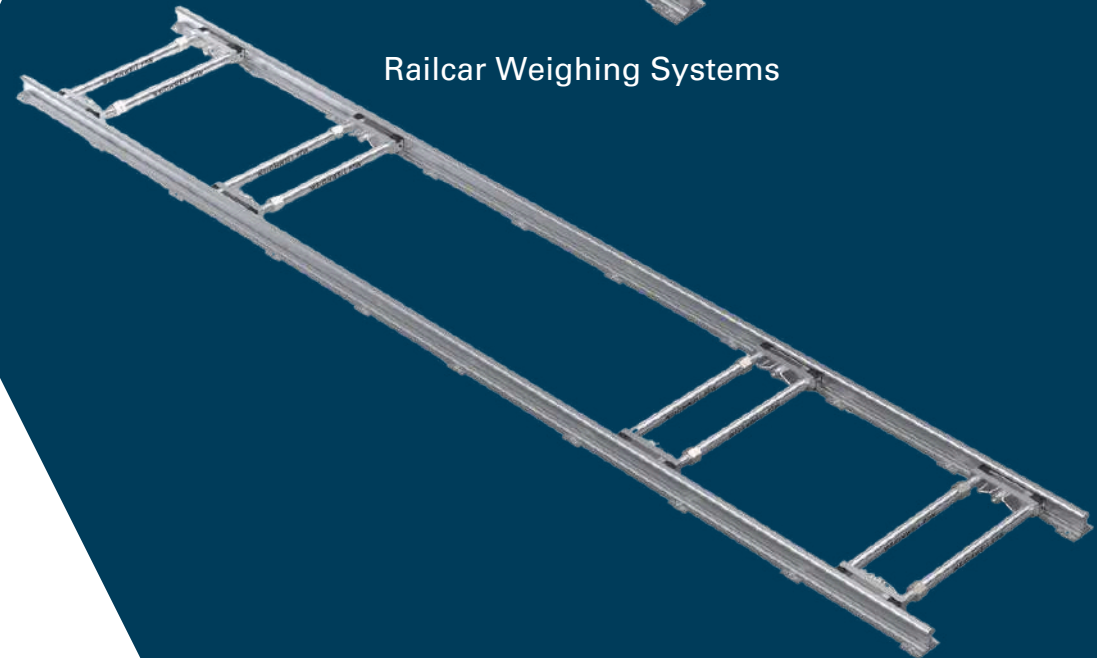
Axle Weighing System



Bogie Weighing Systems



Railcar Weighing Systems



IN-MOTION WEIGHING SYSTEMS

With its fast setup, low maintenance requirements and reliable performance in demanding conditions, the in-motion **PTW** is the ideal choice for improving your freight terminal's weighing operations.

The system operates with a robust, rechargeable battery, making it ideal for use in remote locations or areas where power supply is unavailable.



Rapid Installation:

The **PTW** can be set up in less than 15 minutes, with no disruption to normal operations.

Heavy-Duty Capacity:

The **PTW** is built to handle heavy loads, with the ability to weigh up to 40,000kg per axle, making it suitable for demanding freight applications.

No Track Modifications:

The **PTW** is easy to install with no cutting, drilling, or welding. It integrates seamlessly within existing infrastructure.



TRACKCELL™ SYSTEM



Installed within existing infrastructure, the Bogie Workshop System replaces sections of rail with high-precision loadcells (TrackCells).

Suitable for weighing bogies, but also the complete railcar, this system can provide accurate individual wheel weights.



CROSSCELL SYSTEM



The CrossCell system is designed for precise corner-specific weighing, making it ideal for railcar manufacturing and industrial applications.

Durable, high-precision loadcells can be quickly set up at designated measuring points to determine individual corner loads.



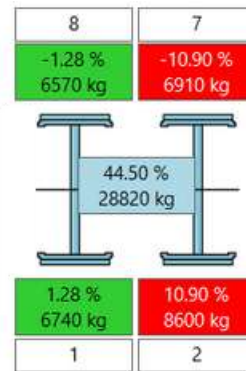
SOFTWARE INTERFACE

CELL 1
5100 KG



CELL 2
5150 KG

ConnectWeigh™ software: Suitable for static weighing and provides a direct output of the weight from the rail scale.



ptwX software: Designed for static weighing with weighing screens specific to the rail vehicles configuration

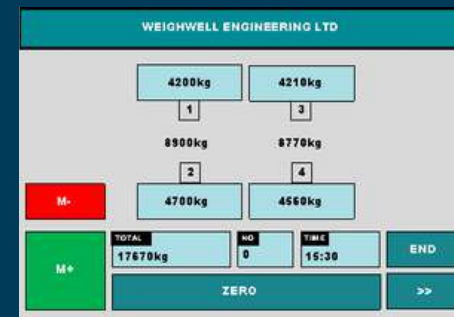


WiM Software Designed for the in-motion weighing of rail vehicles. It can visually highlight imbalanced loads

INDICATOR INTERFACE



In-Motion Weighing Indicator: Functions using a physical keypad and can weigh mixed wagon rakes effectively.



Static Weighing Indicator: Features a touchscreen interface equipped with an integrated QWERTY alphanumeric keypad.



OUR WEIGHING SERVICES

Hire

Flexible Weighing Solutions Without Long-Term Commitment

If you need a short-term or project-specific weighing solution, our hire service provides high-quality portable train weighing systems with quick setup and expert support.

Our solutions are available for both static and in-motion weighing applications, helping you complete projects without a long-term investment.



Training

Expert Guidance for Operational Excellence

To maximise the effectiveness of your weighing system, we provide hands-on and online training tailored to your team's needs.

Covering system operation, maintenance and interface operation, our training ensures your staff can operate with confidence and efficiency.



Calibration

Ensuring Long-Term Accuracy

We offer both onsite and in-house calibration services, ensuring minimal disruption while keeping your equipment operating at peak performance.

Our processes are traceable to UKAS standards, giving you complete confidence in your measurements.



WHY CHOOSE WEIGHWELL

Since its groundbreaking launch back in 1997, the **Portable Train Weigher (PTW)** has been trusted by rail companies in over 40 countries.

Certifications

At Weighwell, we hold ourselves to the highest standards in the rail industry. Our commitment to safety, quality and sustainability is recognised by the following certifications:

- **RISQS Audited:** Meeting the strictest safety standards for the UK rail sector.
- **EcoVadis Assessed:** Demonstrating our dedication to sustainability and responsible business practices.
- **ISO 9001 Certified:** Committed to quality management and continuous improvement.



Global Reach:

We serve customers across the world, from freight to high-speed rail.

Dedicated Support:

Our after-sales service ensures that you'll have the support you need, when you need it.

Proven Accuracy:

Our systems deliver reliable results, ensuring compliance and performance.

Industry Expertise:

Over 30 years of proven experience in the rail weighing industry.



Contact Form

LET'S WORK
TOGETHER

weighwell.com

+44 (0)114 2699955

info@weighwell.com

Weighwell House, Woolley Colliery Road
Darton, Barnsley, S75 5JA

TRAIN WEIGHING SPECIALISTS